

# POWERFLEX®

## PART NUMBER

# PFR57-1508

## DESCRIPTION

## REAR UPPER LINK ARM OUTER BUSH

## INSTALLATION GUIDE

### Contents (parts per pack):

8 x Polyurethane Bushes      1 x PTFE/Silicone Grease  
4 x Stainless Steel Sleeves      4 x Zinc Plated Mild Steel D Washers  
4 x Zinc Plated Mild Steel Washers

Please read the complete fitting instructions and check package components before fitment. These fitting instructions are to be used as a guide and in conjunction with workshop manual.

It is recommended that:

- all work to be carried out by a licensed technician;
- all safety precautions adhered to;
- wheel alignment to be checked and adjusted as required after any suspension work.
- All fasteners must be tensioned to manufacturer's torque settings.

### Fitting Instructions:

1. Remove the original rubber bush from the rear upper link arm.
2. Clean any dirt and corrosion from the bore of the arm and file off any sharp edges.
3. Push in the polyurethane bush into the bore of the arm so that the top hat section faces outwards to the arm.
4. Apply some of the supplied grease into the bore of the polyurethane bush and push in the stainless steel sleeve so that it sits flush inside, as shown in Figure 1.

**Note: the sleeve will protrude either side.**

5. Place the D shaped mild steel washer over the protruding sleeve the side nearest to the upright.
6. Place the original bolt through the round mild steel washer and refit the rear upper link arm back to the vehicle and tension all hardware to manufacturers recommended torque settings.

**Note: make sure the D shaped washer is allowed to rotate so that it misses the casting on the upright.**

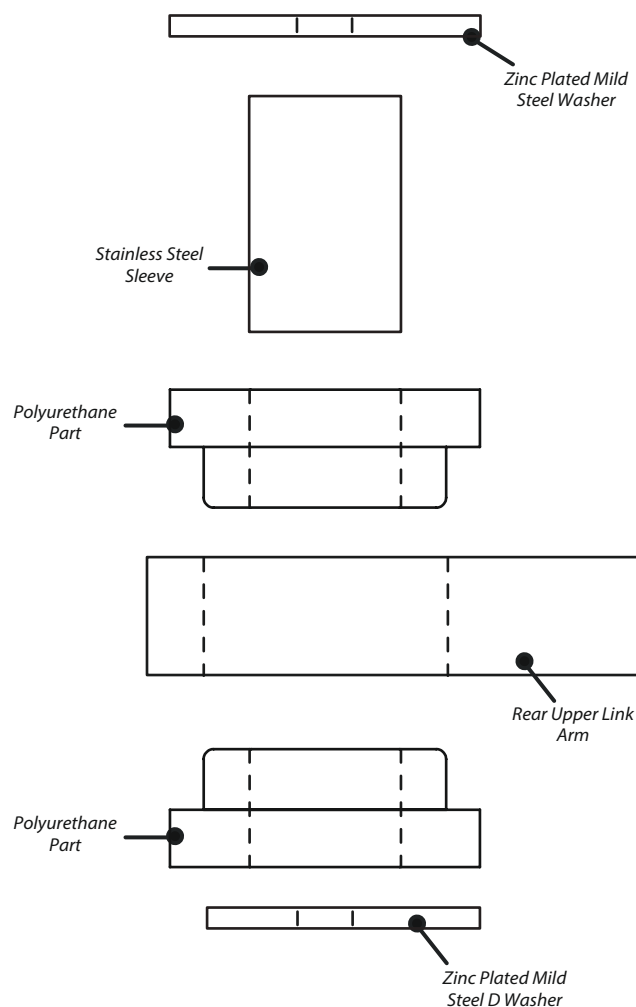


Figure 1